

# DIGI ULISSE P I/E

Digital sliding gauge with spring system for internal/external grooves

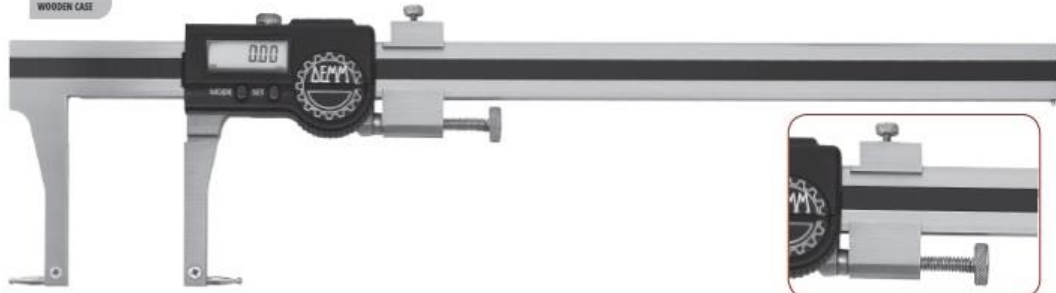
Calibro a corsoio con precarica per gole interne/esterne



## GAUGES FOR GROOVES CALIBRI PER GOLE

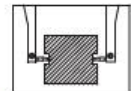
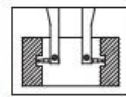
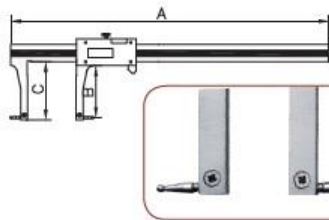


- Digital sliding gauge for internal/external grooves
- In hardened stainless steel
- Electronic IP67 mm/inc
- Interchangeable rods
- Supplied with rods gauged balls 3 mm
- Calibro a corsoio per gole interne/esterne
- In acciaio inox temprato
- Elettronica IP67 mm/inc
- Puntali intercambiabili
- Di serie coppia terminali sferici 3 mm



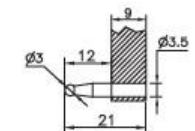
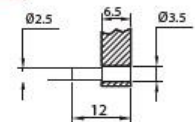
Internal application  
Applicazione per interni

External application  
Applicazione per esterni



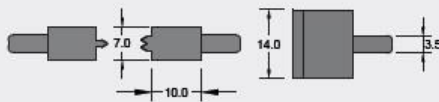
Article	Range	A	B	C	Bar Section	Resolution	Accuracy	Code	Kg	
DIGI ULISSE P I/E 200	I	24-220	332	52	64	16,5 X 4,5	0,01	0,02	07165	0,295
	E	0-170	332	61	64	16,5 X 4,5	0,01	0,02		

Article	Range	A	B	C	Bar Section	Resolution	Accuracy	Code	Kg	
DIGI ULISSE P I/E 350	I	42-370	470	96	103	17 x 5	0,01	0,03	07164	0,630
	E	0-280	470	100	103	17 x 5	0,01	0,03		
DIGI ULISSE P I/E 450	I	42-470	570	96	103	17 x 5	0,01	0,03	07172	0,710
	E	0-380	570	100	103	17 x 5	0,01	0,03		

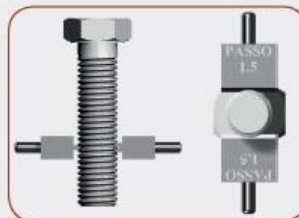


## OPTIONAL INTERCHANGEABLE ENDS DIGI ULISSE OPTIONAL TERMINALI INTERCAMBIABILI PER DIGI ULISSE

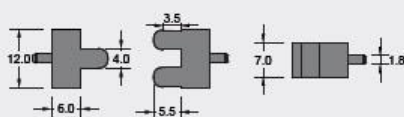
Terminali per misurazioni di passi:  
METRICO 0,8 - 1 - 1,25 - 1,5 - 1,75 - 2 - 2,5 - 3  
WITWORTH 6 - 8 - 10 - 12 - 16  
GAS 11 - 14 - 19



Article	Code
VP1	00209



Terminali per controllo modulo filettature trapezio:



Article	Code
VP3	00216

